



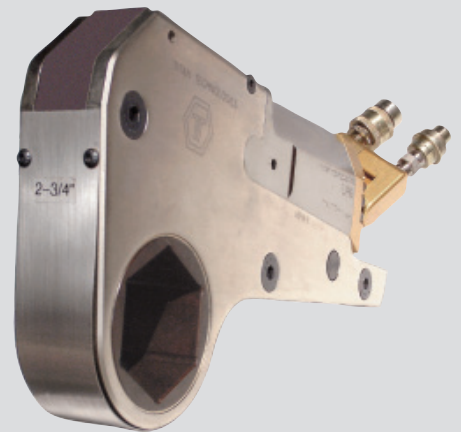
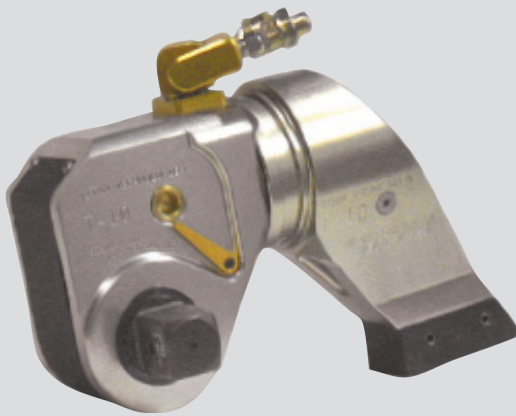
TITAN

TECHNOLOGIES INTERNATIONAL, INC
SUPERIOR BOLTING SOLUTIONS®

Dependable • Fast • Efficient

TITAN T-Series & LP Series Hydraulic Torque Wrenches

are an integral element to get
your bolting job done right, on time, every timeSM



TITAN is a leading bolting solutions provider committed to offering the most reliable, comprehensive and SUPERIOR BOLTING SOLUTIONS® world wide.



TITAN

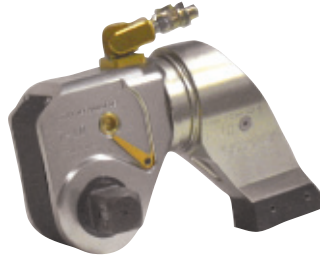
TECHNOLOGIES INTERNATIONAL, INC
SUPERIOR BOLTING SOLUTIONS®

T-Series Hydraulic Torque Wrenches



- Certified Torque Accuracy +/- 3%
- Calibration Certification supplied with each tool
- Manufactured to ISO 9001:2000 and EN/JISQ/AS9100:2004 quality standards.

- Calibrated & ready for use
- Powerful
- Compact
- Accurate
- Durable



- Faster
- Light-Weight
- Efficient

TITAN's Patented Technology T-SERIES The Global Standard for Hydraulic Torque Tools.



- **Patented Housing** - For Exceptional Strength, resulting in longer tool life and less repair cost.
- **TITAN Tru-Swivel™** - Advanced patented, Multi-Axis design provides a low profile combined with ease of motion.
- **Designed from finite element** - Advancing the art of the Hydraulic Wrench giving greater value and lower total cost of ownership.
- **Patented Piston Dampening System** - Eliminates tool breakdown normally incurred from over stroke and shock damage resulting in longer tool life and lower repair costs.
- **Finely crafted** - of the highest quality Aircraft Grade Materials for unrivaled strength and long life.
- **Guaranteed Quality** - Titan backs its products with the strongest warranty in the business. Manufactured to ISO 9001:2000 and EN/JISQ/AS9100:2004 quality standards. The highest standard in the business.
- **Unique Drive Pawl Design** -for unrivaled durability accuracy and efficiency.
- **TITAN T-SERIES - Proven!** *Titan Technologies is the fastest growing company in our industry. We provide a better engineered tool at competitive prices. Our tools are designed for longer life so your total cost of ownership is less with Titan. The quality of the products, our service and our people are the reason for this unprecedented growth.*



Unsurpassed Accuracy & Repeatability

Every Titan Hydraulic Torque Wrench is cycle tested under load and then calibrated. All Titan tools are provided with certification of calibration with traceability to N.I.S.T. Titan calibration equipment is calibrated by NVLAP Accredited Calibration Laboratory .

ENGINEERED FOR QUALITY ... BUILT TO LAST!

**FOUR times
the LIFE EXPECTANCY
of our competitors!**



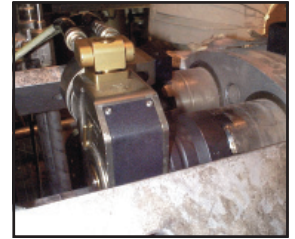
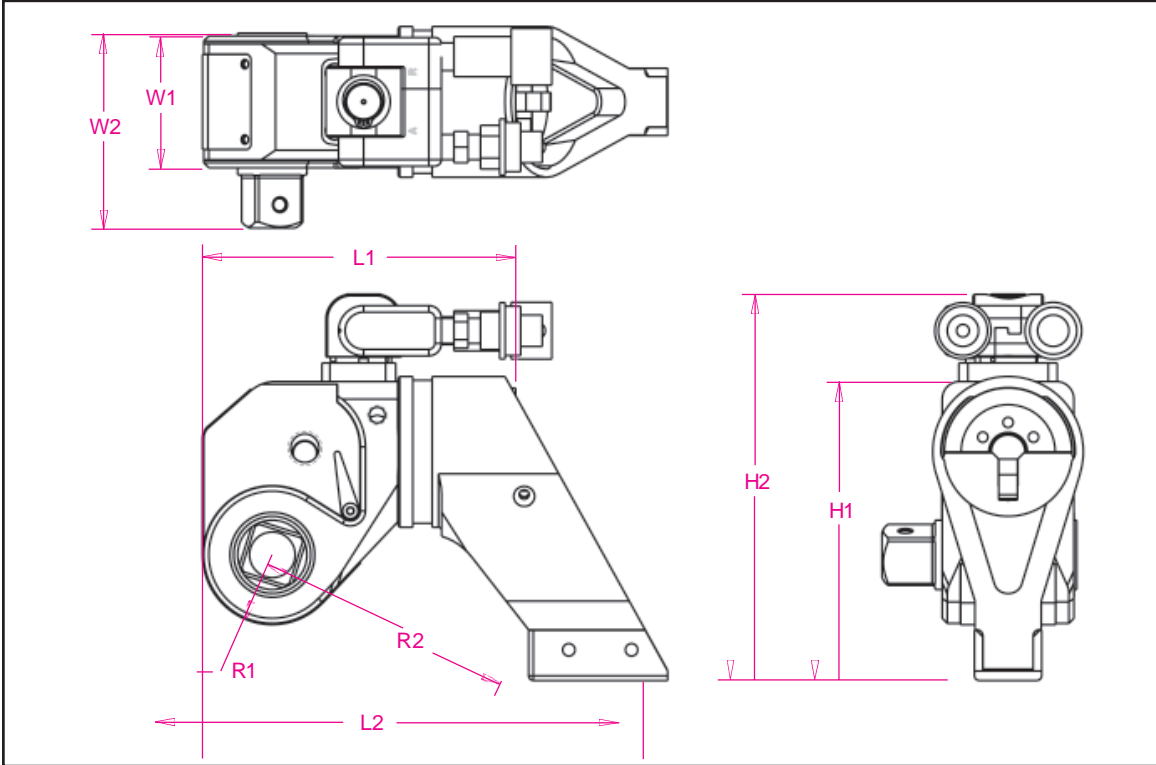
Titan's Patented Piston Dampening system protects the tool and the operator when loosening the most stubborn fasteners.



Fast, Dependable, Accurate. Titan T-Series gets the job done even in the most hostile environment.



Patented Multi-Axis Swivel provides for better accessibility and prevents hose kinking.



High Quality Impact Sockets are Available in Fractional, Metric, 12-Point and Castellated styles.



Titan's patented housing makes the difficult job, easier.

TITAN MODEL NUMBER		T1	T3	T5	T8	T10	T25	T50
Square Drive Size	(In)	3/4	1	1-1/2	1-1/2	1-1/2	2-1/2	2-1/2
Optional Square Drive Sizes	(In)	1/2 & 1	3/4 & 1 1/2	1 & 2 1/2	1 & 2 1/2	1 & 2 1/2	1 1/2 & 3 1/2	3-1/2
Range Optional Hex Drive Sizes (Other sizes and special drives are available upon request)	(In)	3/8 to 1	5/8 to 1 1/4	1 to 1 1/2	1 1/8 to 1 3/4	1 1/4 to 2	1 5/8 to 2 1/4	1 5/8 to 2 3/4
	(mm)	9 to 26	16 to 32	26 to 38	28 to 45	32 to 51	41 to 57	41 to 70
Torque Range	(Ft-Lb)	197 to 1359	468 to 3124	816 to 5605	1168 to 8062	1162 to 11067	3726 to 24749	8274 to 54176
	(N-M)	268 to 1842	634 to 4235	1106 to 7600	1583 to 10931	1575 to 15004	3726 to 33555	11220 to 73463
Weight; Includes Reaction Arm	(Lb)	5.0	10.0	17.0	25.0	30.0	70.0	115.0
	(Kg)	2.27	4.54	7.71	11.34	13.61	31.75	52.15
DIMENSIONS								
L1 - Body Length	(In)	4.81	6.29	7.10	7.70	8.80	11.80	14.75
	(mm)	122.2	159.8	180.3	195.6	223.5	299.7	374.7
L2 - Overall Length; Includes Arm	(In)	6.95	9.59	11.22	12.57	13.89	18.52	21.50
	(mm)	176.5	243.6	285.0	319.3	352.8	470.4	546.1
H1 - Tool Height	(In)	3.63	4.93	5.75	6.50	7.84	9.60	15.00
	(mm)	92.2	125.2	146.1	165.1	199.1	243.8	381.0
H2 - Overall Height; Includes Swivel	(In)	4.95	6.75	7.71	8.49	9.11	11.55	16.80
	(mm)	125.7	171.5	195.8	215.6	231.4	293.4	426.7
W1 - Tool Width	(In)	1.98	2.63	3.15	3.57	3.95	5.25	7.00
	(mm)	50.3	66.8	80.0	90.7	100.3	133.4	177.8
W2 - Tool Width; Includes Sq. Dr.	(In)	2.83	3.89	4.65	5.09	5.61	7.48	9.25
	(mm)	71.9	98.8	118.1	129.3	142.5	190.0	235.0
R1 - Tool Radius around the Bolt	(In)	0.98	1.13	1.56	1.76	1.95	2.60	3.00
	(mm)	24.9	28.7	39.6	44.7	49.5	66.0	76.2
R2 - Reaction Reach	(In)	3.85	5.33	6.15	6.96	7.69	11.30	12.50
	(mm)	97.8	135.4	156.2	176.8	195.3	287.0	317.5

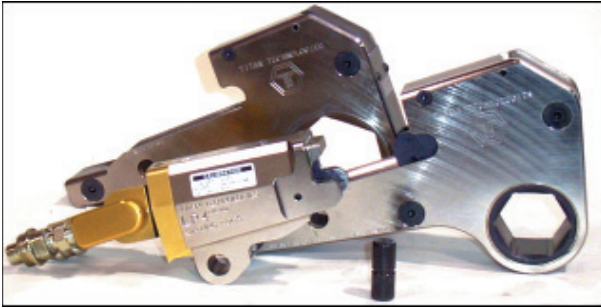


TITAN

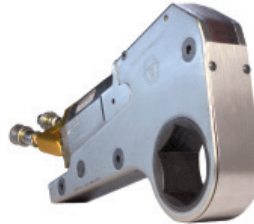
TECHNOLOGIES INTERNATIONAL, INC
SUPERIOR BOLTING SOLUTIONS®

- Powerful
- Compact
- Accurate
- Durable
- Faster
- Light-Weight
- Efficient

LP Series



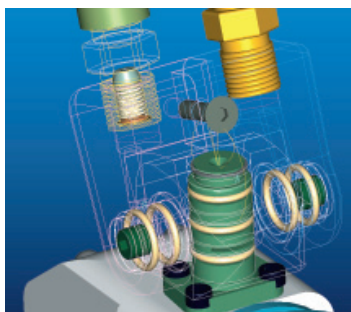
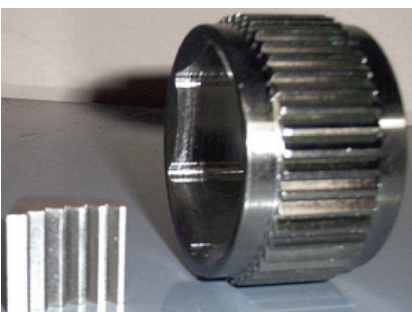
- Certified Torque Accuracy $\pm 3\%$
- Calibration Certification supplied with each tool
- Manufactured to ISO 9001:2000 and EN/ JISQ/AS9100:2004 quality standards.



Extreme Low Profile, Engineered to fit the tightest applications!

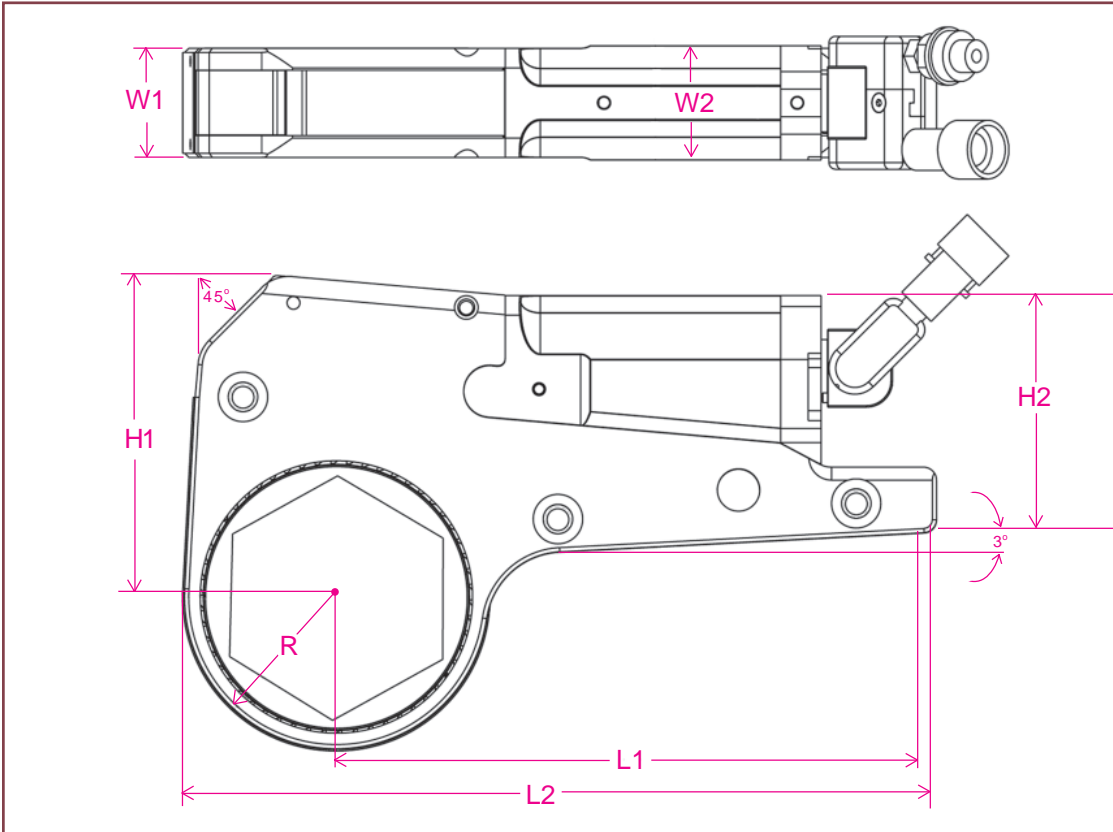


- **Unique Ratchet Tooth Design** - for superior durability and accuracy.
- **TITAN Tru-Swivel™** - Advanced patented, Multi-Axis design provides a low profile combined with ease of motion.
- **Finely Crafted** - of the highest quality Aircraft Grade Materials for unrivaled strength and long life.
- **Ratcheting Assurance Mechanism** - for hands free safety and unmatched repeatability.
- **Patented Piston Dampening System** - eliminates piston and cylinder damage due to over-stroke.
- **Sleek Design** - affords Easy Fit on the tightest bolt patterns.
- **Unique** - "Wide Track" Ratchet Pawl Mechanism distributes stress better and provides for more contact area than other designs for longer tool life and reduced repair costs.
- **Comparable width link and cylinder** - to fit on more applications.
- **Aluminum-bronze drive bushings** - for longer tool life.
- **Tight Radius Link cassettes** - engineered from FEA for greater strength and versatility.
- **"Set Back" Cylinder Design** allows the tool to fit on even the most restrictive bolt pattern.



“The Standard for Hydraulic Torque Wrenches”

Manufactured to ISO 9001:2000 and EN/JISQ/AS9100:2004 quality standards



Low cost step-down sleeves are available in all sizes.



Available in fractional & metric sizes, hex & 12 pt., square & 8 pt.



Patented multi-axis swivel, provides for better accessibility and prevents hose kinking.



Fast, Dependable, Accurate. TITAN LP-Series shown here tightening boltings on Wimbeldon roof



Tool lays flat for better accessibility

TITAN MODEL NUMBER	Units	LP 2	LP 4	LP 8	LP 16	LP 32	LP 48
Range of Hex Sizes A/F	(in) (mm)	3/4 to 2-3/8 19 to 60	7/8 to 3-1/8 22 to 80	1-1/4 to 4-1/2 32 to 115	1-5/8 to 5 41 to 127	2-3/16 to 6-1/8 56 to 155	3-1/8 to 6-1/8 80 to 155
Torque Range	(ft-lb) (n-m)	268 to 1826 363 to 2476	568 to 3788 770 to 5137	1075 to 8024 1457 to 10881	2360 to 16231 3200 to 22000	4896 to 32640 6639 to 44250	7125 to 47500 9660 to 64400
Cylinder Weight	(lb) (kg)	3.45 1.56	5.8 2.63	10.2 4.62	15.5 7.03	18 8.16	19.4 8.80
Range of Link Weight	(lb) (kg)	2.20 to 3.50 1.00 to 1.58	5.25 to 7.50 2.38 to 3.40	11.40 to 14.10 5.17 to 6.39	19.70 to 27.60 8.93 to 12.51	32.00 to 99.00 14.50 to 44.90	35.00 to 99.00 15.87 to 44.90
DIMENSIONS							
L1-Maximum Reaction Reach	(in) (mm)	7.00 177.80	8.41 213.69	11.31 287.32	14.00 355.60	16.00 406.40	16.00 406.40
L2-Overall Length	(in) (mm)	8.90 226.06	10.70 271.78	14.27 362.59	17.95 455.93	19.25 488.95	19.25 488.95
H1-Center of Bolt to Top of Tool	(in) (mm)	3.86 98.17	4.77 121.29	6.16 156.67	7.25 184.15	10.50 266.70	10.50 266.70
H2-Back End Height	(in) (mm)	3.45 87.63	3.78 96.14	6.05 153.67	8.50 215.9	10.90 276.86	11.40 289.56
W1-Tool Width at Link	(in) (mm)	1.25 31.75	1.62 41.28	2.10 53.34	2.35 59.69	2.55 64.77	2.55 64.77
W2-Tool Width at Cylinder	(in) (mm)	1.25 31.75	1.75 44.45	2.10 53.34	2.45 62.23	2.80 71.12	3.10 78.74
R-Tool Radius around Bolt	(in) (mm)	1.03 to 1.75 26.16 to 44.48	1.31 to 2.30 33.32 to 58.47	1.72 to 2.95 43.82 to 74.98	1.95 to 3.50 49.53 to 88.9	2.50 to 4.75 63.5 to 120.65	2.75 to 4.75 70.0 to 120.65

Titan LP Series Tools are manufactured solely from Aircraft Grade, High Strength Alloys selected for their superior stress and fatigue resistant properties.

TITAN

LP SuperThin™ Series Links

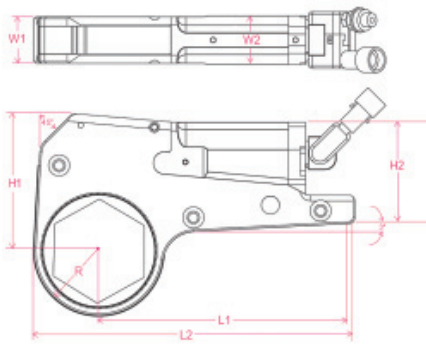
Speciality EXTREME LOW PROFILE Hydraulic Wrenches
for BOP and other very restricted access applications



LP Series Standard Link and SuperThin™ Link

Designed and developed for those very tight applications on BOP's. The **Titan SuperThin™** Series Links are made to deliver an accurate and repeatable torque in even the tightest applications. The tools are continuous ratcheting and eliminate the heretofore time consuming and inaccurate methods used in BOP and other hard to access bolting.

A continuous ratcheting tool. All tools are provided with certification of calibration to +/-3% Torque System accuracy.



TITAN MODEL NUMBER	Units	LP 2	LP 4
Range of Hex Sizes A/F	(in) (mm)	3/4 to 2-3/8 19 to 60	7/8 to 3-1/8 22 to 80
Torque Range	(ft-lb) (n-m)	190 to 1900 270 to 2700	390 to 3900 560 to 5600
Cylinder Weight	(lb) (kg)	3.45 1.56	5.8 2.63
Range of Link Weight	(lb) (kg)	1.00 to 3.00 0.45 to 1.36	4.50 to 6.50 2.01 to 2.90
DIMENSIONS of Titan SuperThin™ Extreme access Links			
L1-Maximum Reaction Reach	(in) (mm)	7.00 177.80	8.41 213.69
L2-Overall Length	(in) (mm)	8.90 226.06	10.70 271.78
H1-Center of Bolt to Top of Tool	(in) (mm)	3.86 98.17	4.77 121.29
H2-Back End Height	(in) (mm)	3.45 87.63	3.78 96.14
W1-Tool Width at Link	(in) (mm)	.75 19.00	1.00 25.40
W2-Tool Width at Cylinder	(in) (mm)	1.25 31.75	1.75 44.45
R-Tool Radius around Bolt	(in) (mm)	1.00 to 1.70 26.16 to 44.48	1.25 to 2.25 33.32 to 58.47

TITAN

PLUS SERIES PUMPS WITH FAN COOLED HEAT EXCHANGER

**Reduces the heat build up by up to 25%!
Extends pump life!
Reduce overheating down time!**



Titan offers Heat Exchangers for both its EXE Series and Plus Series Hydraulic Wrench pumps. The Heat exchangers can be fitted to existing Titan pumps or can be purchased as an accessory. Designed for heavy use applications such as wind farms. The Titan Heat Exchangers help extend the life of the pump and prevent down time caused by pump overheating.

Part Number	Description
TITAN E115-FC	Titan 115V/60hz, High Speed Torque Wrench Pump. Sgl Tool Port w/ Fan Cooled Heat Exchanger
TITAN E230-FC	Titan 230/50hz, High Speed Torque Wrench Pump. Sgl Tool Port w/ Fan Cooled Heat Exchanger
TITAN E115-4FC	Titan 115V/60hz, High Speed Torque Wrench Pump, 4 Tool Ports w/ Fan Cooled Heat Exchanger
TITAN E230-4FC	Titan 230/50hz, High Speed Torque Wrench Pump. 4 Tool Ports w/ Fan Cooled Heat Exchanger
TITAN TWIN ELECTRIC-FC	Titan DUAL MOTOR PUMP w/ Extreme High Flow Hydraulic Wrench applications (1500 cu in per min) 230V/50hz, Sgl Tool Port w/ Fan Cooled Heat Exchanger
E115FC E230FC	Upgrade Kit for existing pumps. We can upgrade several pump versions, including older models. Call or e-mail for complete details. Due to pump modifications this upgrade is not field installable.

Heat Exchangers are standard on all Titan EXE MAX Express Series Models

Standard Features on TITAN Express Pumps Include:

- 2 Powerful Motors
- LIGHT ALLOY Housing & Tank
- Integral Carrying Handle
- Internal Low Pressure regulator
- Valve Configuration: 4-way Spool Solenoid
- Filter-Lubricator-Regulator
- Easy Access Oil Fill Port
- Oil Sight Gauge with Thermometer
- 2 gallon / 7.6 liter oil reservoir
- 10,000 psi / 700bar 15' / 4.5m Hydraulic Hose Assy.
- Safety Hose Burst Guards
- 20' / 6.1 meter Remote Control Assy.
- Heavy Duty "Dead Man" Safety Switch
- External adjustable pressure regulator
- Retract side internal relief valve
- Maximum pressure: 10,000 psi (700 bar)
- Precision liquid filled dual scale gauge
- Single or 4 Tool Manifold

TITAN

Twin-Plus Air

Power Requirements: 70-100psi / 95 CFM Air • Flow: 1340 cu in / 22 lpm per min.



Model Number	Maximum Oil Flow vs Pressure	Length	Width	Height	Weight
<i>Model P+ TWIN Single Port</i>	1340 cu. in./min @ 100 psi (22 liter/min @ 7 bar)	19" 282mm	16.5" 840mm	19.8" 503mm	116 lb 52kg
	110 cu. in./min @ 10000 psi (2 liter/min @ 700 bar)				
<i>Model P+4 TWIN Four Port</i>	1340 cu. in./min @ 100 psi (22 liter/min @ 7 bar)	19" 282mm	16.5" 840mm	19.8" 503mm	116 lb 52kg
	110 cu. in./min @ 10000 psi (2 liter/min @ 700 bar)				

TITAN

Twin-PlusElectric

Power Requirements: 220V-50HZ / 26 amp • Flow: 1440 cu in / 23.6 lpm per min.



Model Number	Maximum Oil Flow vs Pressure	Length	Width	Height	Weight
<i>E230 Twin 230V Single Port</i>	1440 cu. in./min @ 100 psi (23.6 liter/min @ 7 bar)	19" 282mm	16.5" 840mm	19.8" 503mm	116 lb 52kg
	112 cu. in./min @ 10000 psi (2 liter/min @ 700 bar)				
<i>E230 Twin-4 230V 4 Port</i>	1440 cu. in./min @ 100 psi (23.6 liter/min @ 7 bar)	19" 282mm	16.5" 840mm	19.8" 503mm	116 lb 52kg
	112 cu. in./min @ 10000 psi (2 liter/min @ 700 bar)				

Standard Features on TITAN Express Pumps Include:

Fan Cooled Heat Exchangers are standard on Titan EXE Series full frame electric Pumps

- 3 Stage Piston Design
- 4-Way Valve
- Maximum Pressure 10,000 psi (700 bar)
- Easy Access Pressure Setting
- Quiet - Meets OSHA Standards
- Max Pumps Have Single or 4-Tool Ports
- Mini Pumps Have 1-Tool Port
- Heavy Duty 25 ft. (7.62 m.) Remote
- Liquid Filled Pressure Gauge psi/bar
- 15 ft. (4.57 m.) Hose Pair



	Performance	Oil Flow	Dimensions	Weight	Reservoir	Power
EXPRESS MAX	0-1100 psi 1100-3200 psi 3200-10000 psi	390 cu. in/min 110 cu. in/min 43 cu. in/min	Length: 16.2 in Width: 11.8 in Height: 17.5 in	59 lbs	2 Gal.	.75 hp
Part Number EXE-MAX	0-76 bar 76-220 bar 220-700 bar	6.4 Liter/min 1.8 Liter/min 0.7 Liter/min	Length: 41 cm Width: 30 cm Height: 44 cm	27 kg	7.57 L.	.56 kw
EXPRESS MINI	0-1100 psi 1100-3200 psi 3200-10000 psi	235 cu. in/min 66 cu. in/min 25cu. in/min	Length: 12.6 in Width: 8.7 in Height: 17.0 in	31 lbs	1 Gal.	.35 hp
Part Number EXE-MINI	0-76 bar 76-220 bar 220-700 bar	3.9 Liter/min 1.1 Liter/min 0.4 Liter/min	Length: 32 cm Width: 22 cm Height: 43 cm	14 kg	3.78 L.	.26 kw
EXPRESS Whirlwind Auto Cycle	0-1100 psi 1100-3200 psi 3200-10000 psi	520 cu. in/min 180 cu. in/min 80 cu. in/min	Length: 17.0 in Width: 10.0 in Height: 19.5 in	72 lbs	2 Gal.	1.5 hp
Part Number EXE-HP-AUTO	0-76 bar 76-220 bar 220-700 bar	8.5 Liter/min 2.9 Liter/min 1.3 Liter/min	Length: 40 cm Width: 38 cm Height: 46 cm	33 kg	7.57 L.	1.12 kw
EXPRESS Auto Cycle	0-1100 psi 1100-3200 psi 3200-10000 psi	390 cu. in/min 110 cu. in/min 43 cu. in/min	Length: 16.2 in Width: 11.8 in Height: 17.5 in	63 lbs	2 Gal.	.75 hp
Part Number EXE-MAX-AUTO	0-76 bar 76-220 bar 220-700 bar	6.4 Liter/min 1.8 Liter/min 0.7 Liter/min	Length: 41 cm Width: 30 cm Height: 44 cm	28 kg	7.57 L.	.56 kw
EXPRESS Max Air	0-1100 psi 1100-3200 psi 3200-10000 psi	460 cu. in/min 153 cu. in/min 55 cu. in/min	Length: 20.5 in Width: 13.8 in Height: 20 in	66 lbs	2 Gal.	3.75 hp
Part Number EXA-MAX	0-76 bar 76-220 bar 220-700 bar	7.5 Liter/min 2.5 Liter/min 0.9 Liter/min	Length: 52 cm Width: 35 cm Height: 51 cm	30 kg	7.57 L.	2.80 kw
EXPRESS Mini Air	0-1100 psi 1100-3200 psi 3200-10000 psi	275 cu. in/min 86 cu. in/min 32 cu. in/min	Length: 12.2 in Width: 11.5 in Height: 16.5 in	41 lbs	1 Gal.	1.50 hp
Part Number EXA-MINI	0-76 bar 76-220 bar 220-700 bar	4.5 Liter/min 1.4 Liter/min 0.5 Liter/min	Length: 31 cm Width: 29 cm Height: 42 cm	19 kg	3.78 L.	1.12 kw

TITAN Plus Series Pumps

Standard Features on TITAN Express Pumps Include:

- LIGHT ALLOY Housing & Tank
- Integral Carrying Handle
- Internal Low Pressure regulator
- Valve Configuration: 4-way Spool Solenoid
- Filter-Lubricator-Regulator
- Easy Access Oil Fill Port
- Oil Sight Gauge with Thermometer
- 2 gallon / 7.6 liter oil reservoir
- 10,000 psi / 700bar 15' / 4.5m Hydraulic Hose Assy.
- Safety Hose Burst Guards
- 20' / 6.1 meter Remote Control Assy.
- Heavy Duty "Dead Man" Safety Switch
- External adjustable pressure regulator
- Retract side internal relief valve
- Maximum pressure: 10,000 psi (700 bar)
- Precision liquid filled dual scale gauge
- Single or 4 Tool Manifold
- Twin Pump Available

TITAN Plus Series Air

Power Requirements: 70-100psi / 50 CFM Air • Flow: 670 cu in / 11.1 lpm per min. • Powerful 3 HP motor (2.24Kw)



Model Number	Maximum Oil Flow vs Pressure	Length	Width	Height	Weight
<i>Model P+ Single Port</i>	670 cu. in./min @ 100 psi (11.1 liter/min @ 7 bar)	9.5" 241mm	16.5" 419mm	19.8" 503mm	58 lb 26kg
	55 cu. in./min @ 10000 psi (1 liter/min @ 700 bar)				
<i>Model P+4 Four Port</i>	670 cu. in./min @ 100 psi (11.1 liter/min @ 7 bar)	9.5" 241mm	16.5" 419mm	19.8" 503mm	58 lb 26kg
	55 cu. in./min @ 10000 psi (1 liter/min @ 700 bar)				

TITAN Plus Series Electric w / Optional Heat Exchanger

Power Requirements: 115V-60HZ / 28 amp • Flow: 720 cu in / 11.8 lpm per min • 1 1/8 HP motor (.9Kw)



Model Number	Maximum Oil Flow vs Pressure	Length	Width	Height	Weight
<i>E115-FC Single Port</i>	720 cu. in./min @ 100 psi (11.8 L/min @ 7 bar)	9.5" 241mm	17.1" 434mm	8.1" 460mm	46 lb 20.8kg
	56 cu. in./min @ 10000 psi (.91 L/min @ 700 bar)				
<i>E115-4FC 4 Port</i>	720 cu. in./min @ 100 psi (11.8 L/min @ 7 bar)	9.5" 241mm	17.1" 434mm	8.1" 460mm	46 lb 20.8kg
	56 cu. in./min @ 10000 psi (.91 L/min @ 700 bar)				

Power Requirements: 115V-60HZ / 25 amp • Flow: 720 cu in / 11.8 lpm per min • 1 1/8 HP motor (.9Kw)



Model Number	Maximum Oil Flow vs Pressure	Length	Width	Height	Weight
<i>E115 Single Port</i>	720 cu. in./min @ 100 psi (11.8 L/min @ 7 bar)	9.5" 241mm	17.1" 434mm	8.1" 460mm	46 lb 20.8kg
	56 cu. in./min @ 10000 psi (.91 L/min @ 700 bar)				
<i>E115-4 4 Port</i>	720 cu. in./min @ 100 psi (11.8 L/min @ 7 bar)	9.5" 241mm	17.1" 434mm	8.1" 460mm	46 lb 20.8kg
	56 cu. in./min @ 10000 psi (.91 L/min @ 700 bar)				

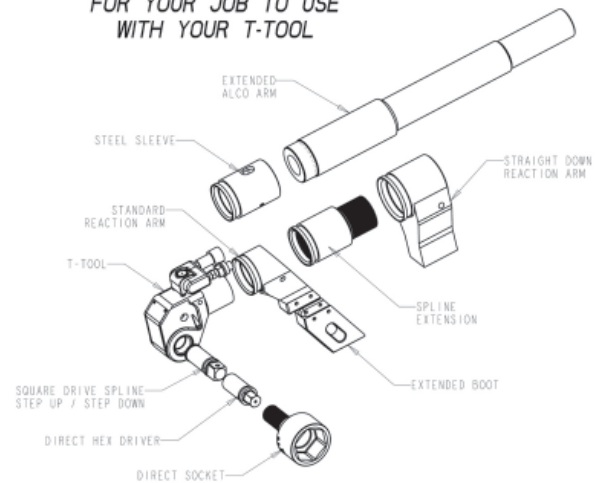
Power Requirements: 220V-50HZ / 13 amp • Flow: Flow: 720 cu in / 11.8 lpm per min • 1 1/8 HP motor (.9Kw)



Model Number	Maximum Oil Flow vs Pressure	Length	Width	Height	Weight
<i>E220 Single Port</i>	720 cu. in./min @ 100 psi (11.8 L/min @ 7 bar)	9.5" 241mm	17.1" 434mm	8.1" 460mm	46 lb 20.8kg
	56 cu. in./min @ 10000 psi (.91 L/min @ 700 bar)				
<i>E220-4 4 Port</i>	720 cu. in./min @ 100 psi (11.8 L/min @ 7 bar)	9.5" 241mm	17.1" 434mm	8.1" 460mm	46 lb 20.8kg
	56 cu. in./min @ 10000 psi (.91 L/min @ 700 bar)				

Bolting Accessories

CHOOSE THE PERFECT ACCESSORY
FOR YOUR JOB TO USE
WITH YOUR T-TOOL



Accessories for the T-Series Tool

- Extended, Short and Special Reaction Arms
- Square Drives
- Direct Drives and Sockets
- Impact Sockets
- Square & Hex Drive Accessories
- Hex stock
- Calibration Services
- Hydraulic Hoses
- Maintenance & Repair Kits
- Training and Certification of Personnel



Titan offers an extensive selection of 700bar (10,000 psi) Pressure Gauges for Hydraulic Wrench usage.



Model 080055:
Precision Liquid Filled Gauge
Model 090228-14:
1/4% Accuracy w/Certificate
Model 090058:
1/2% Accuracy w/Certificate



FLR Filter Lubricator Regulator

Titan offers both intrgrated and free standing FLR's

4-Tool Manifolds and protective cages



Quick Connects, Couplers, Fittings

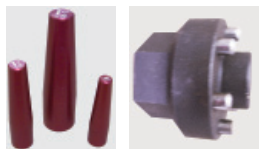


Titan offers a diverse combination of accessories to be used with its Hydraulic Wrench Pumps. They include -

- 4 tool manifolds
- Protective cages
- Sight Gauges with Thermometer

Torque Wrench Hoses Twin Line hose with Quick Disconnect Couplers

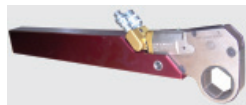
Model: 090172 = 15 ft length
Model: 090173 = 20 ft length
Model: 090174 = 25 ft length
Model: 090175 = 30 ft length
Model: 090176 = 35 ft length



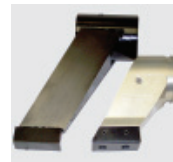
Custom tooling for easy repair and maintenance of your Titan Hydraulic Wrenches are available. Shown here are O-Ring installation tools which makes quick work of changing the seals in the tools and a End Cap removal and installation tool for the T Series tools.



Light Alloy ALCO reaction Arms are available for all Titan Hydraulic Wrench models.



All Titan T Series tools have direct drive accessories. Most sizes are available from stock. Shown here are direct hex drives and a double hex direct drive. All Titan Drives are constructed of Aircraft Grade M300 Alloy for superior strength and performance.

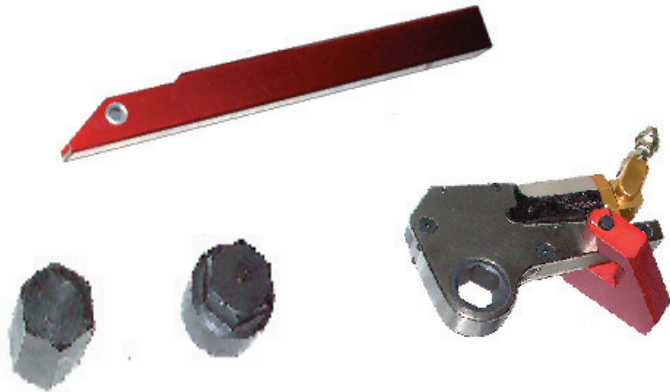
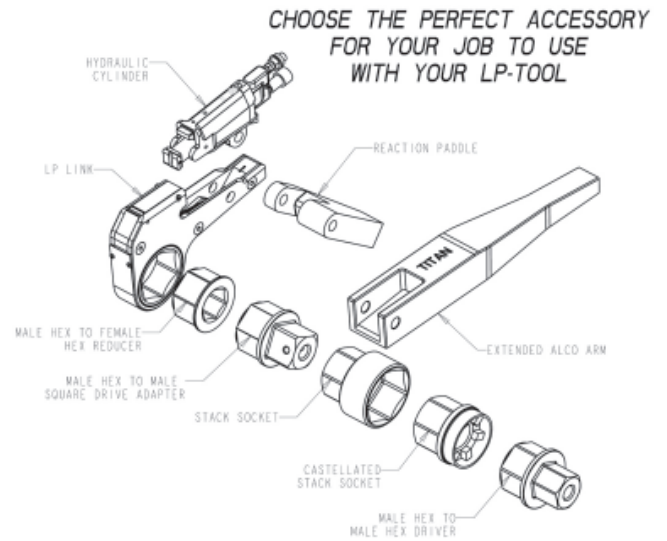


Special long Reaction Arms are available for all tools.



Light alloy and stubby short reactions are available for special applications.





Accessories for the LP Tool

- ALCO extended reaction arm
- Reaction arms
- Hex & 12 pt. step-down sleeves
- Stack sockets
- Square drive adapter
- Hex stock



Custom Cages for Hydraulic Wrench Pumps. Shown here is the customized WIND TURBINE Cage which is designed for optimal protection and ease of movement in WIND applications.

Customized Tooling Kits available



Shown are Vestas Wind Turbine and BOP "Choke & Kill" kits



Titan offers Superior Bolting Solutions. Shown here are Hydraulic Flange Spreaders. With the TITAN POWER SPREADER, You Can Open, Spread, Lift and Level. Easy! Fast! Quiet! Safe!

- Universal, One size fits all
- Light Weight - Just 12 lbs.
- One Person Operation
- 3" Travel In A Single Pass
- Safe, No loose wedges or parts
- Jaws Open Parallel
- No Drift - It Stays Put!
- SAFE. Can Be Remotely Operated

TITAN Mission Statement

Our objective is to be the world's leading provider of bolting solutions by manufacturing and supplying the highest quality and most comprehensive product line of Hydraulic, Pneumatic & Electric Torque Wrenches and accessories, Hydraulic Nuts, Tensioners, and other high-end bolting technologies on the market.

We deliver a higher value to the customer through superior products, outstanding service, along with innovative engineering support and leading edge customer driven technologies.

Honesty, integrity, professionalism and an uncompromised commitment to excellence are what define us. We succeed for the benefit of our customers, shareholders, employees, dealers and representatives.

Titan Technologies - Different from other companies that sell bolting products and services. Titan is a solutions based company which features a vast array of solutions to any bolting application.



People: Titan enjoys a worldwide network of experienced experts trained to recommend the most cost-effective solution for your bolting job.

Technical Expertise - Titan has Bolting applications experience in multiple industries including power generation, wind, oil & gas, ship building & repair, refining, chemicals, pulp and paper and more.



Quality: All of our products are designed using the latest aerospace finite element design techniques and machined to the tightest tolerances in the business, to ISO 9001:2000 and EN/JISQ/AS9100:2004 quality standards

Local Service - Extensive network of independent sales representatives and authorized dealers located worldwide.



Engineering: Patently different. Titan spends a higher percentage of its revenue in research and development to ensure the highest quality and most durable products on the market.

Quality Guarantee

Comprehensive Extended Warranty

ADDITIONAL PRODUCTS & SERVICES OFFERED

- Titan ETite™ Electric Torque Wrenches
- Titan Bolt Tensioners - Modular Style
- Titan Bolt Tensioners - Dedicated Style
- Titan Hydraulic Nuts
- Titan Power Flange Spreaders
- Titan Power Nut Splitters
- Titan AirTite® Pneumatic Torque Wrenches
- Sockets & Accessories
- Striking Wrenches
- Rentals
- Equipment Service & Repair
- Calibration Services



TITAN

TECHNOLOGIES INTERNATIONAL, INC
SUPERIOR BOLTING SOLUTIONS®

9001 Jameel Street Suite 180
Houston, TX 77040

Toll-Free: 866.345.8484

Phone: 281.449.9994 • Fax: 281.449.9996

Email: sales@titanti.com

<http://www.titanti.com>



Your Local **TITAN** Representative: